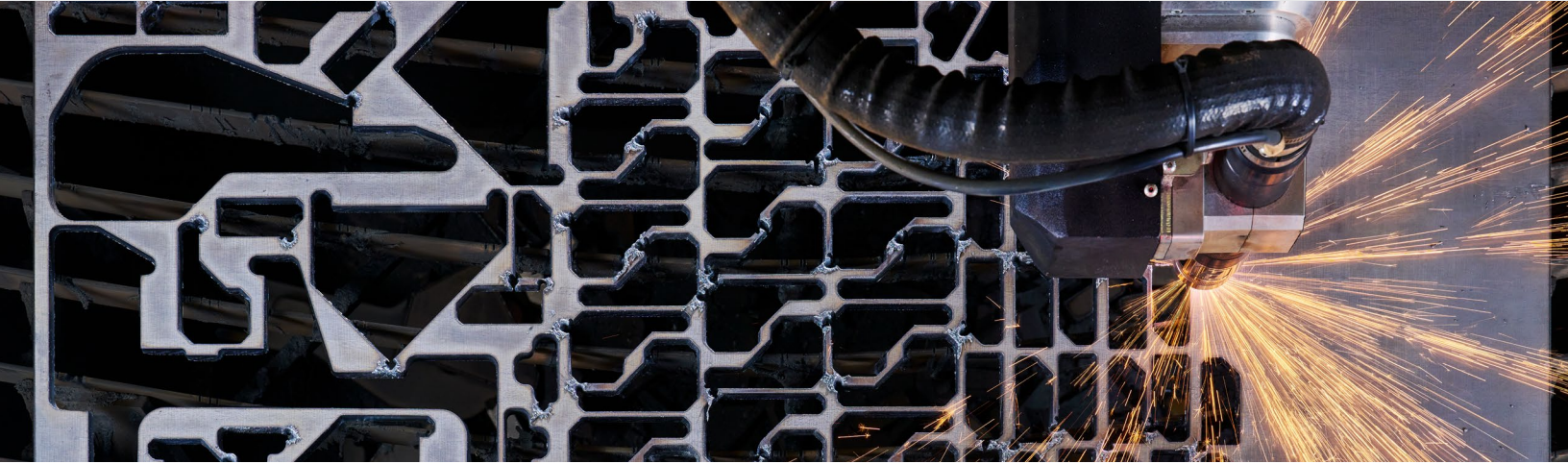


Plate Saver significantly increases plate savings and profitability

Delivers embedded expertise for XPR plasma systems



No matter your industry or application, your production floor must cut faster and more efficiently to remain competitive. Hypertherm Associates has collaborated with its global partners for over fifty years to provide our customers with the most significant advances in mechanized plasma cutting technology and automation software to boost production and improve the bottom line.

Key business benefits

Reduces cost-per-part

Increases material utilization by as much as 14% and reduces cost-per-part

Eases carbon footprint

Lowers greenhouse gas emissions by producing the same parts with less steel

Minimizes part separation

Utilizes a moving pierce to minimize part separations while maintaining part quality

Plate Saver improves material utilization by as much as 14% depending on your part mix when nesting square or rectangular parts.

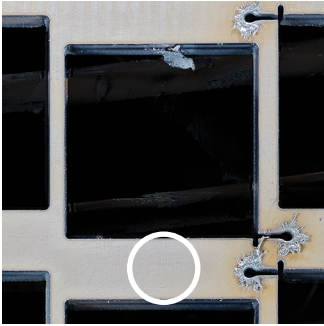
Optimize your Hypertherm plasma performance with SureCut™ technology

Our exclusive SureCut technology automatically embeds advanced cutting capabilities into our plasma cutting process, delivering improved outcomes, simplifying cutting operations, and reducing operator intervention.

Plate Saver™ significantly increases plate savings and profitability

Plate Saver introduces new specialty leads to the CAM software when programming jobs for machines equipped with XPR®. It adjusts lead size, style, and location and uses a moving pierce to minimize part separations while at the same time maintaining part quality. The enhanced arc stability feature of XPR X-Definition® plasma quickly stabilizes the plasma torch arc, allowing for shorter lead lengths and closer part placement.

Without Plate Saver



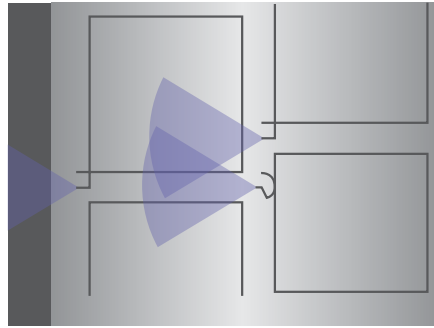
Traditional leads require more space between parts.

With Plate Saver



Specialty leads minimize part separations.

Splash zone helps maintain cut quality



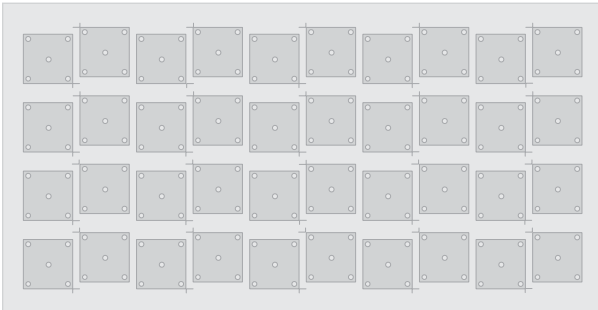
Leads are appropriately placed and use a moving pierce. This ensures that the direction of the molten splatter is a predictable "splash zone," directed off the plate or towards parts already cut, with easily removable slag.

Nesting with Plate Saver technology

Plate Saver is most effective when nesting square or rectangular parts. The below example shows square parts yielding a dramatic 14 percentage point improvement in true utilization rate:

Without Plate Saver

40 parts, 56% true utilization



With Plate Saver

50 parts, 70% true utilization

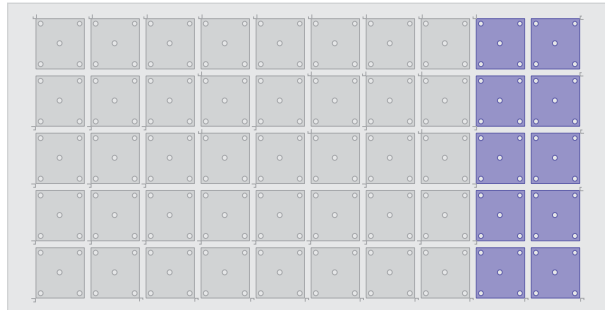
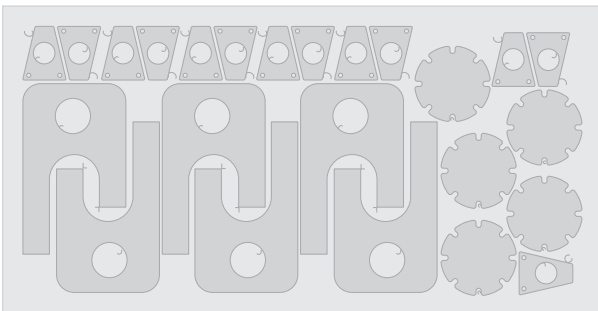


Plate Saver yields an impressive three percentage point improvement on average for jobs containing a mix of differently shaped parts. This results in significantly lower annual material costs and cost-per-part—resulting in higher profitability.

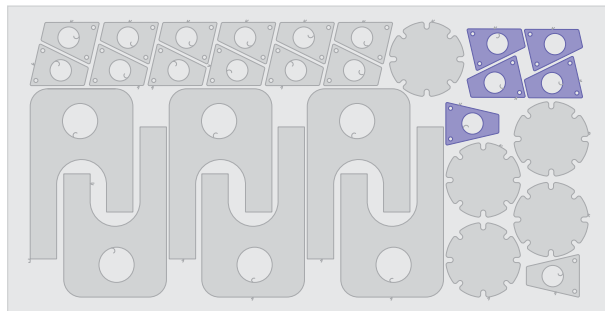
Without Plate Saver

24 parts, 62% true utilization

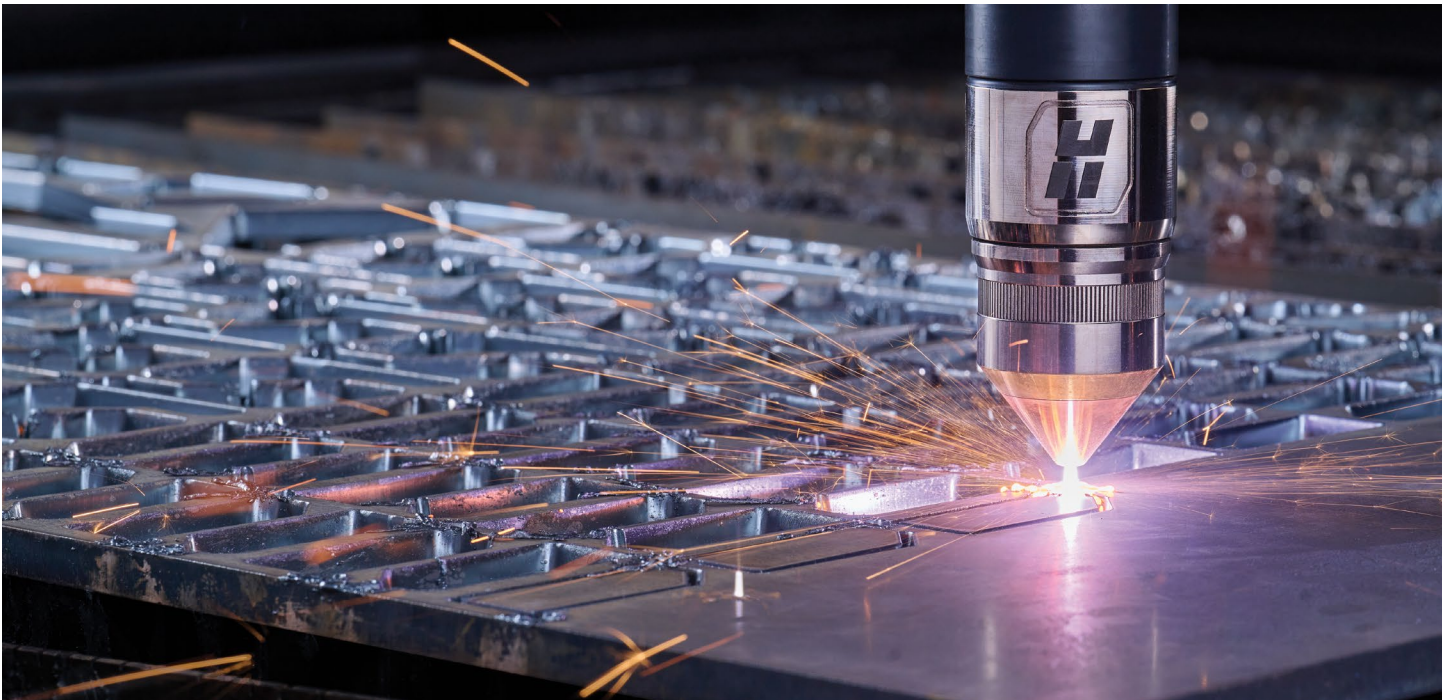


With Plate Saver

29 parts, 65% true utilization



All examples based on mild steel, 19 mm (0.75 in.)



System requirements

- For use with mild steel, X-Y cutting only
- Applies to material thickness and appropriate plasma process combinations between 13 mm (0.5 in.) and 32 mm (1.25 in.)
- Hypertherm XPR® X-Definition® plasma system
- ProNest® or CAM software from an authorized partner
- EDGE® Connect or CNC from an authorized partner
- Note: Plate Saver moving pierce technique may result in increased sparking and spray.

Achieve lower annual material costs. Higher profitability.

To stay competitive, manufacturers must improve their total cutting process to boost production and minimize operating costs. SureCut technology optimizes Hypertherm plasma performance by automatically embedding advanced cutting capabilities and delivering improved outcomes for our customers.

SHAPING POSSIBILITY[®]

PLASMA | LASER | WATERJET | AUTOMATION | SOFTWARE | CONSUMABLES

Learn more about Plate Saver and other SureCut technologies at www.hypertherm.com/SureCut

Hypertherm, Plate Saver, SureCut, XPR, EDGE, ProNest, and X-Definition are trademarks of Hypertherm, Inc. and may be registered in the United States and/or other countries.

Please visit www.hypertherm.com/patents for more details about Hypertherm Associates patent numbers and types.

© 1/2024 Hypertherm, Inc. Revision 4

898120



As 100% Associate owners, we are all focused on delivering a superior customer experience. www.hyperthermassociates.com/ownership

Environmental stewardship is one of Hypertherm Associates' core values. www.hyperthermassociates.com/environment

100% Associate-owned

