

KMT Waterjet Cutting Pumps

# STREAMLINE PRO® III

## 90,000psi/60hp

INCREASED PRODUCTIVITY  
MAXIMUM PRESSURE

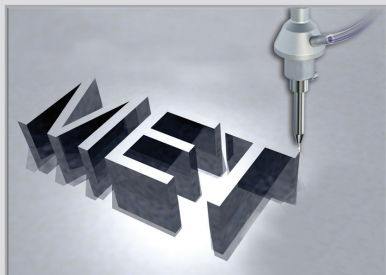
**FASTER CUTTING\*\***

\*\*The PRO-III 90,000psi/60hp pump will significantly increase cutting productivity by 50 - 70% over industry standard 60,000psi/50hp cutting speeds

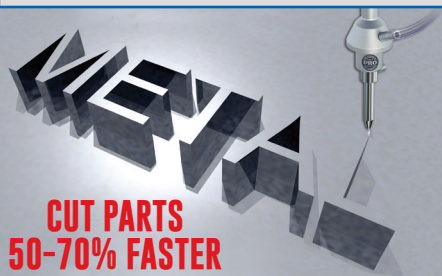


Shown with Optional  
Redundant Intensifier

Industry Standard  
60,000psi/50hp  
Single Head Cutting



PRO-III 90,000psi/60hp  
Single Head Cutting



NUMBER OF CUTTING HEADS	ORIFICE SIZE	@PSI
1	.011"	90,000

### Key Pump Features and Options Include:

**Proven Technology** The **PRO-III** pump uses technology that has millions of operational usage hours

**High Pressure Intensifiers** 90,000psi Topworks (Deadhead)

**Horsepower Selection** 60hp

**Top Cover Guard Interlock Design** Meets EN ISO13849-1 Safety Performance Standard PLa rating (Optional)

**IE3 and NEMA Premium Motor Design** Optimized motor efficiency, reduced electrical consumption

**Siemens PLC Based Electrical Panel** Universal design for global network support

**Redesigned Electrical Panel** Separation of High Voltage & Low Voltage sections to meet IEC/EN 60204-1 Standards

The Right Pump Matters



# PRO-III SPECIFICATIONS

DESCRIPTION	60
Motor Rating	60hp (45kw)
Pressure Range (Deadhead)	90,000psi (6,200 bar)
Max. Flow Rate at Max. Pressure (60 Hz)	0.78 gal/min (2.9 lpm)
Length	83.7" (2,126 mm)
Width	53.7" (1,364 mm)
Height	59.3" (1,506 mm)
<b>CUTTING WATER CIRCUIT</b>	
Attenuator Volume	.42 gal (1.6 L)
Cutting Water Inlet Pressure	35-85psi (2.41-5.86 bar)
Min. Cutting Water Inlet Flow	4.0 gal (15.1 L)
Low Pressure Filter	10 µm abs.
<b>CONTROLS &amp; ELECTRIC</b>	
Nom. Current at 480V/60Hz (Full Load Amp)	70 A
<b>HYDRAULICS</b>	
Hydraulic Tank Capacity	48 gal (182 L)
Oil Level and Temperature Control	Sensor
<b>STANDARD FEATURES</b>	
Adjustable Booster Pump	
Cutting Water Inlet Shut-Off Valve	
Dual Pressure Setting	
Oil Drip Pan	
Dump Valve	
Water Cooled Heat Exchanger	
Cover	
Doors	
High Pressure Transducer	
<b>OPTIONAL FEATURES</b>	
Air Cooled Heat Exchanger	
Motor Rewind for 575v & CSA	
Proportional Control	
Redundant Intensifier	
Soft Start/Electronic/Y-Delta	

## NOTE: Applies to all pumps:

Min. pneumatic air pressure 86 PSI

Max. pneumatic air flow rate 1 SCFM

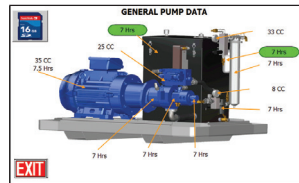
Ambient temp. @ Oil-to-Water cooling circuit 41 - 106°F

Ambient temp. @ Oil-to-Air cooling circuit 41 - 86°F

## NEW! Siemens PLC Based Electrical Panel



The Home Screen displays the operating status of the machine and provides access to a series of setup and monitoring screens.

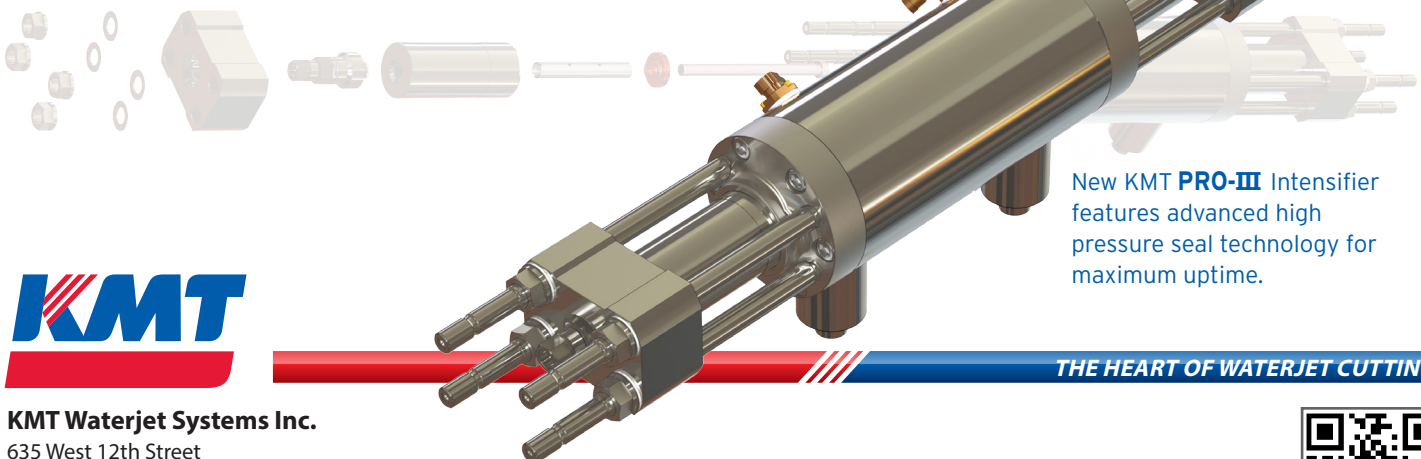


**Harmonized PLC Platform** NEW Touch screen is software updateable, offers 11 languages, optional gauges, and includes monitoring hours and cycle times for preventive maintenance. Standard systems offer Ethernet and USB Port with import/export capabilities.



KMT Waterjet now offers a Cut Calculator APP that compares 90,000psi to 60,000psi cutting.

**Increase Productivity @ 90,000psi!**



New KMT **PRO-III** Intensifier features advanced high pressure seal technology for maximum uptime.



**KMT Waterjet Systems Inc.**

635 West 12th Street

Baxter Springs, KS 66713 USA

620-856-2151 • 800-826-9274

[sales@kmtwaterjet.com](mailto:sales@kmtwaterjet.com)

**THE HEART OF WATERJET CUTTING**

[kmtwaterjet.com](http://kmtwaterjet.com)



5/31/16 - Rev 5

Add Int. Info-Updated Graphics