

KMT Waterjet Cutting Pumps

STREAMLINE PRO® III

90,000psi/125hp

MAXIMUM POWER
MAXIMUM PERFORMANCE

WORLD'S FASTEST WATERJET*

The PRO-III 90,000psi/125hp pump cuts **Twice the Material in the same time frame as industry standard 60,000psi/50hp cutting speeds*



Key Pump Features and Options Include:

Proven Technology The **PRO-III** pump uses technology that has millions of operational usage hours

Dual Intensifiers 90,000psi Topworks (Deadhead)

Horsepower Selection 125hp

Top Cover Guard Interlock Design Meets EN ISO13849-1 Safety Performance Standard PLa rating (Optional)

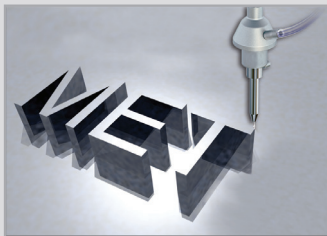
IE3 and NEMA Premium Motor Design Optimized motor efficiency, reduced electrical consumption

Sophisticated Software Multiple languages and remote access with the ability to network multiple pumps

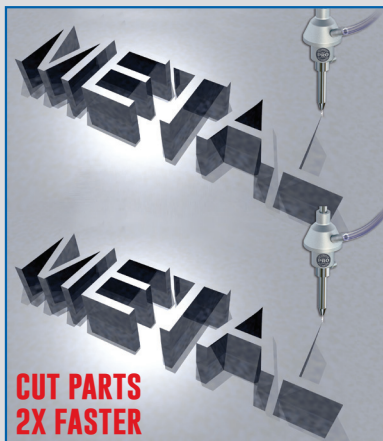
Double Front Doors Allow full access for maintenance and padded insulation reduces sound

The KMT PRO-III 125 Pump is the **BEST** solution for manufacturers requiring maximum performance and outstanding value.

Industry Standard
60,000psi/50hp
Single Head Cutting



PRO-III 90,000psi/125hp
Dual Head Cutting



NUMBER OF CUTTING HEADS	ORIFICE SIZE	@PSI
2	.011" (.279mm)	90,000 (Deadhead)

The Right Pump Matters



PRO-III SPECIFICATIONS

DESCRIPTION	125
Motor Rating	125hp (93.2kw)
Pressure Range (Deadhead)	90,000psi (6.200 bar)
Max. Flow Rate at Max. Pressure (60 Hz)	1.59 gal/min (6.0 lpm)
Length	88" (2,230 mm)
Width	59.09" (1,500 mm)
Height	61.12" (1,552 mm)
CUTTING WATER CIRCUIT	
Attenuator Volume	.42 gal (1.6 L)
Cutting Water Inlet Pressure	35-85psi (2.41-5.86 bar)
Min. Cutting Water Inlet Flow	8 gal (30 L)
Low Pressure Filter	10 µm abs.
CONTROLS & ELECTRIC	
Nom. Current at 480V/60Hz (Full Load Amp)	70 A
HYDRAULICS	
Hydraulic Tank Capacity	110 gal (416 L)
Oil Level and Temperature Control	Sensor
STANDARD FEATURES	
Adjustable Booster Pump	
Cutting Water Inlet Shut-Off Valve	
Dual Pressure Setting	
Oil Drip Pan	
Dump Valve	
Water Cooled Heat Exchanger	
Cover	
Doors	
High Pressure Transducer	
Proportional Control	
Soft Start	
OPTIONAL FEATURES	
Air Cooled Heat Exchanger	
Motor Rewind for 575v & CSA	
Electronic/Y-Delta Start	

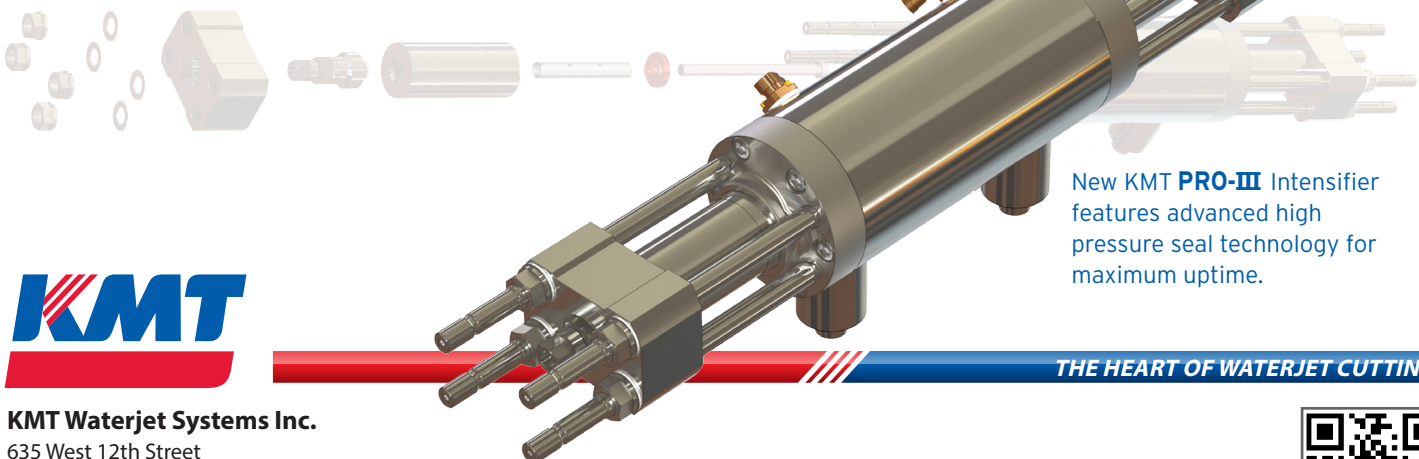
NOTE: Applies to all pumps:

Min. pneumatic air pressure 86 PSI

Max. pneumatic air flow rate 1 SCFM

Ambient temp. @ Oil-to-Water cooling circuit 41 - 106 °F

Ambient temp. @ Oil-to-Air cooling circuit 41 - 86 °F



New KMT **PRO-III** Intensifier features advanced high pressure seal technology for maximum uptime.



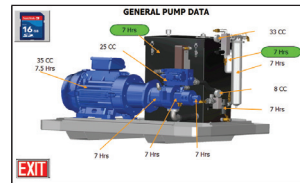
KMT Waterjet Systems Inc.

635 West 12th Street
Baxter Springs, KS 66713 USA
620-856-2151 • 800-826-9274
sales@kmtwaterjet.com

NEW! Siemens PLC Based Electrical Panel



The Home Screen displays the operating status of the machine and provides access to a series of setup and monitoring screens.



Harmonized PLC Platform NEW Touch screen is software updateable, offers 11 languages, optional gauges, and includes monitoring hours and cycle times for preventive maintenance. Standard systems offer Ethernet and USB Port with import/export capabilities.



KMT Waterjet now offers a Cut Calculator APP that compares 90,000psi to 60,000psi cutting.

Increase Productivity @ 90,000psi!



THE HEART OF WATERJET CUTTING



kmtwaterjet.com

5/31/16
PRO-III 125 Pump